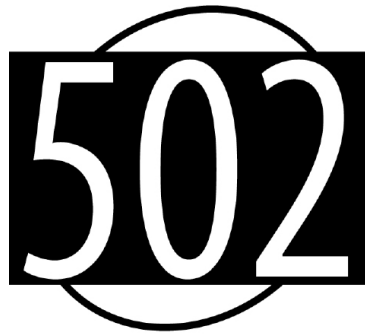




ROUTE



Slate Belt Flex

FOR RESERVATIONS CALL
888-287-8818

LANta Flex is a reservation based, curb-to-curb, shared ride service provided by LANta.

Who is eligible?

LANta Flex is open to the public. Anyone can ride LANtaFlex service with a reservation.

Reservations must be made at least one day prior to the trip. To make a reservation, call **888-287-8818**

Eligible Trips

To use the Route 502 - Slate Belt Flex Zone, trips must either travel entirely within the Flex Zone boundaries, between the Flex Zone and Walmart at Northampton Crossings, or between the Flex Zone and Northampton Community College - Green Pond Campus.

Hours of Operation

Route 502 - Slate Belt Flex is available:

Monday - Friday
6:00 AM - 6:00 PM
Saturday
9:00 AM to 3:00 PM

LANtaBus or LANtaFlex services do not operate on New Year's Day, Easter Sunday, Memorial Day, Independence Day, Labor Day, Thanksgiving Day and Christmas Day.

Making a reservation

To make a reservation, call 888-287-8818. Please have the address of where you are traveling from and where you are traveling to (for major destinations you do not need the street address).

Reservations must be made at least one day prior to travel.

Cancelling a reservation

To cancel a reservation, call 888-287-8818 at least two hours prior to the scheduled pick up time.

Traveling to/from outside the Flex Zone

To travel to or from points outside the Flex Zone, transfers can be made to/from LANta Bus fixed route service at:

- Walmart - Northampton Crossings
- Northampton Community College - Green Pond Campus
- Bangor Plaza
- Wind Gap Plaza

FOR RESERVATIONS CALL
888-287-8818

FOR RESERVATIONS CALL
888-287-8818

Fares

Regular LANta bus fares apply on LANta Flex service. Day passes can be purchased on LANta Flex vehicles. Single ride cash fares can also be accepted. Other LANta fare products may be purchased on LANta Buses or at sales outlets listed below:

Allentown: Family Center (8th & Hamilton); Allentown Transportation Center (6th & Linden); LANta Office (1060 Lehigh Street).

Bethlehem: The Metro Cafe (Broad & Guetter); Plaza Cards and Snacks (115 Bethlehem Plaza).

Easton: LANta Office (3610 Nicholas Street).

Vehicles

LANtaFlex service is operated using LANtaVan vehicles. LANtaVan vehicles are not equipped with bike racks. Child car seat requirements apply to LANtaVan vehicles.

Route 502 Slate Belt LANta Flex service is operated by Easton Coach Company

LANtaBus Fares	
	Effective 06/11/18
One-Way Ride Children 5 and under ride free with a fare-paying adult	\$2.00
Day Pass Unlimited rides all day	\$4.00
10-Ride Ticket	\$16.00
31-Day Pass Good for 31 days after first use	\$60.00
Annual Pass	\$660.00
Transfers Can be purchased when paying fare. Transfers are good for 2 hours from time of purchase and can only be used to complete a one-way trip	\$0.25

All above fare products may be purchased on LANTA buses or at LANtaBus sales outlets. Please see the listing on this page or visit lantabus.com or call 610-776-7433 for locations.

Day Passes and 31-Day Passes are non-transferrable.

Senior Citizens (65+) may ride LANta Bus FREE any time. The PennDOT Senior Citizen ID can be used as proof of eligibility.

Persons with disabilities may purchase a Day Pass for \$1 from the LANtaBus operator.

Please see lantabus.com or call 610-776-7433 for applications for Reduced Fare or Senior ID cards.

For reservations and information

CALL **888-287-8818**
CLICK www.lantabus.com



Follow Us On Twitter:
@LANTALV



Like Us On Facebook:
LANTALehighValley



Subscribe to our Youtube Channel:
LANTALehighValley

Route 502 - Slate Belt Flex Zone

Flex Zone Boundaries

Northern extent

Northampton County line

Southern extent (from West to East)

State Park Rd, Church Rd, Delabole Rd, Mill Road, Route 191, S. 1st St, Bangor southern boundary, Richmond Rd, Sunset Dr, Rt. 611, Hemlock Dr to River Road

Eastern extent

Northampton County line to River Drive

Western extent

Plainfield Township

LANtaBus Connections

Walmart - Northampton Crossings

- Routes 106, 216, 217

NCC - Green Pond Campus

- Routes 101, 220

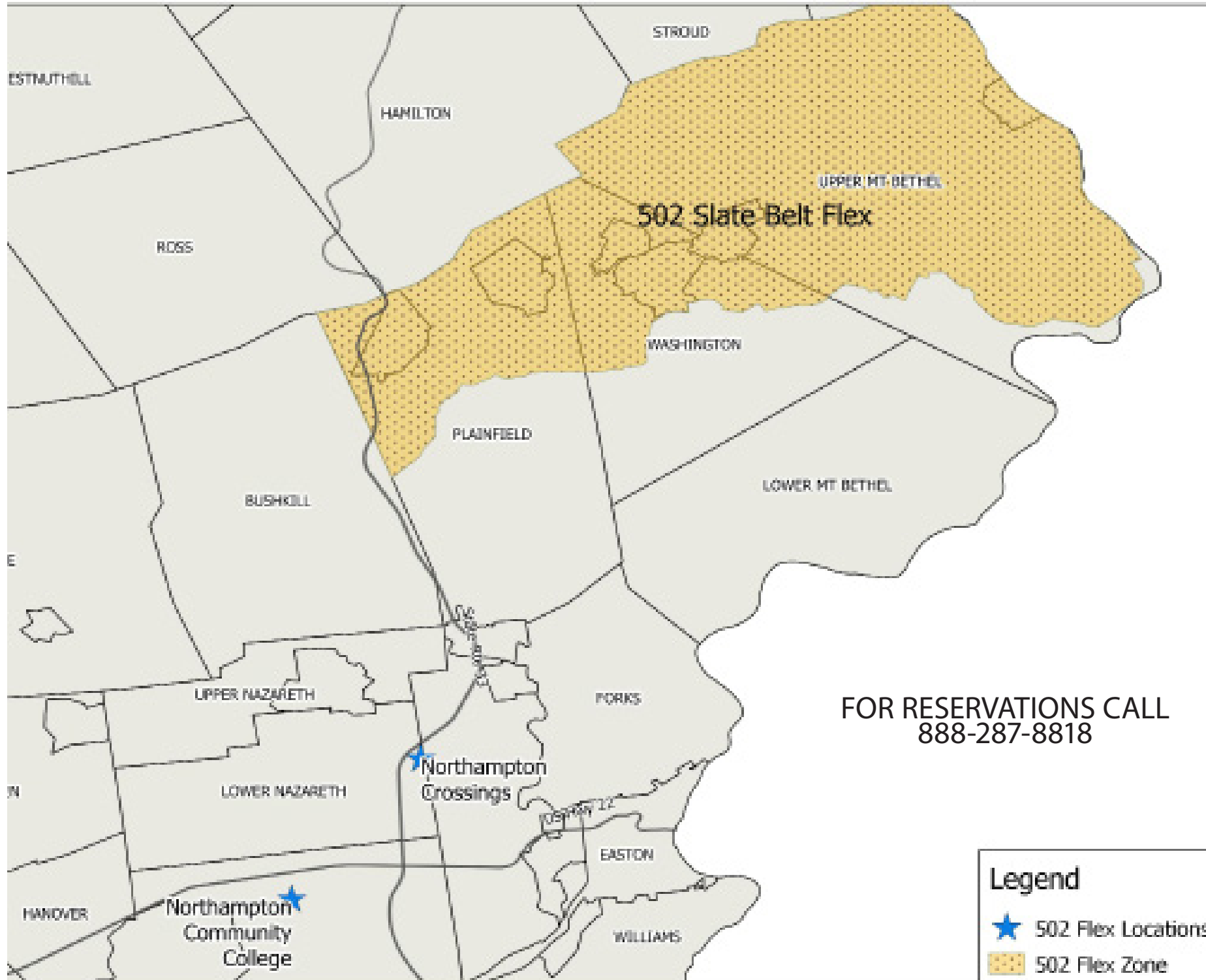
Bangor Plaza

- Route 217

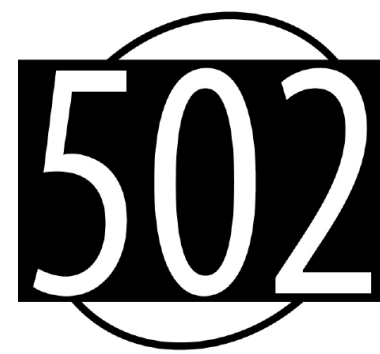
Wind Gap Plaza

- Route 217

Route 502 Slate Belt LANta Flex service is operated by Easton Coach Company



ROUTE



Slate Belt LANtaFlex

○----- EFFECTIVE 06/11/2018

Serves the Slate Belt Flex Zone
With transfers to LANtaBus service at:

- Walmart - Northampton Crossings
- Northampton Community College
 - Green Pond Campus
- Bangor Plaza
- Wind Gap Plaza



FOR RESERVATIONS CALL
888-287-8818

Legend

- ★ 502 Flex Locations
- 502 Flex Zone

For reservations and information

CALL **888-287-8818**
CLICK www.lantabus.com